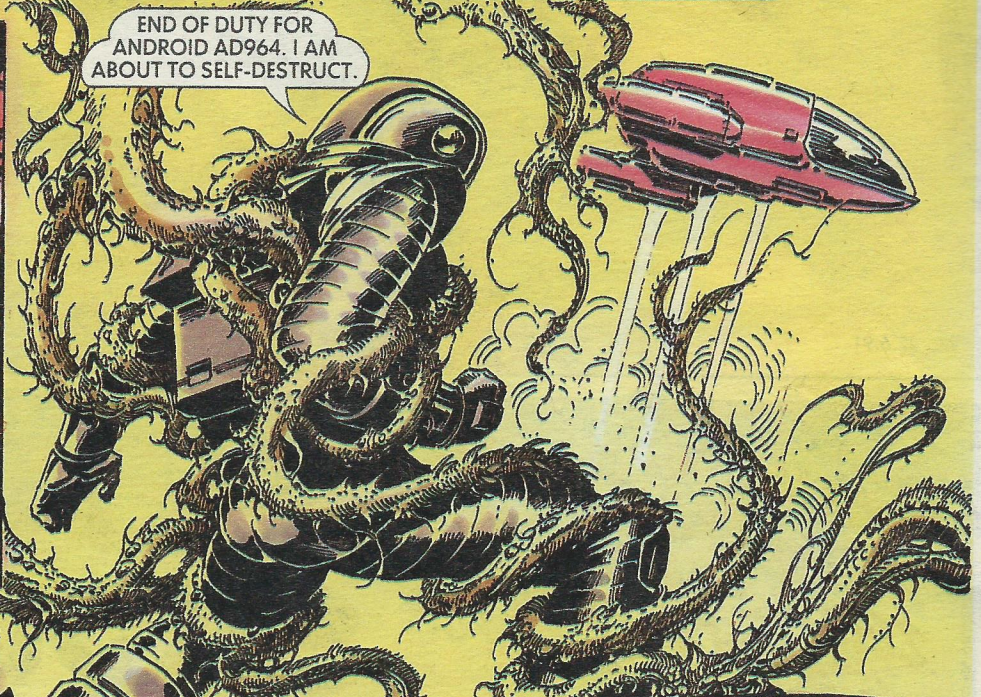


CONTROL, I TRUST FORCE IS PERMISSIBLE AGAINST HOSTILE ALIEN FLORA.



ENSIGN SHOLTO IS ABOARD! I AM HELPLESS, A CAPTIVE. SUGGEST YOU SEAL THE HATCH AND PUT THE SHUTTLE INTO TAKE-OFF MODE.



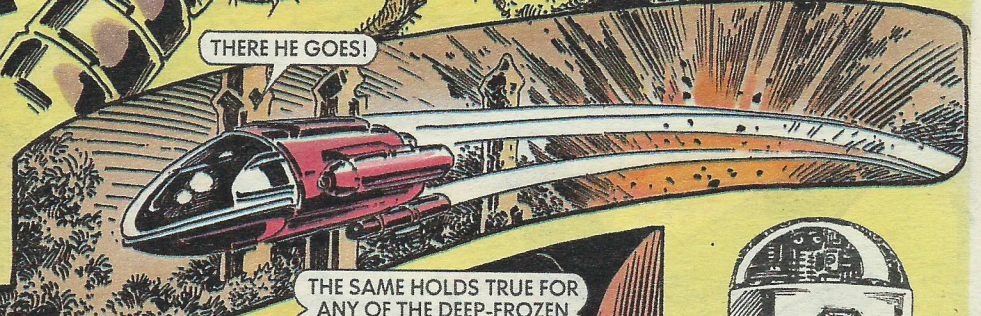
END OF DUTY FOR ANDROID AD964. I AM ABOUT TO SELF-DESTRUCT.



Sholto arrived back...

URH — WHAT'S HAPPENED? WHERE'S ANDY?

THE AD964 JETTISONED HIMSELF. HE IS ABOUT TO TERMINATE.

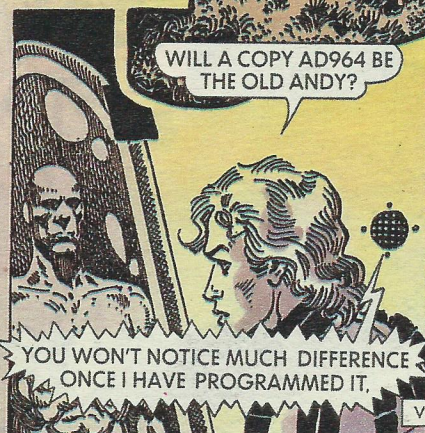


THERE HE GOES!



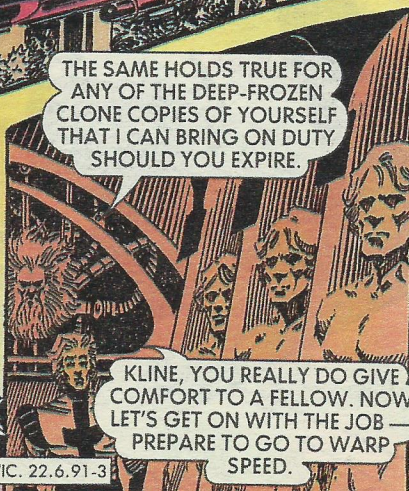
NOW WE CAN KNOW WHAT BECAME OF THOSE LIZARDS.

EATEN BY PLANTS! HARDLY THE SORT OF PLACE TO FOUND A SETTLEMENT.



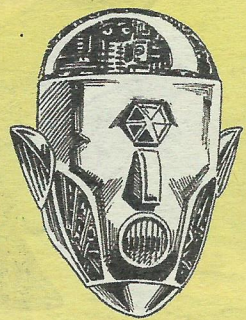
WILL A COPY AD964 BE THE OLD ANDY?

YOU WON'T NOTICE MUCH DIFFERENCE ONCE I HAVE PROGRAMMED IT.



THE SAME HOLDS TRUE FOR ANY OF THE DEEP-FROZEN CLONE COPIES OF YOURSELF THAT I CAN BRING ON DUTY SHOULD YOU EXPIRE.

KLINE, YOU REALLY DO GIVE COMFORT TO A FELLOW. NOW LET'S GET ON WITH THE JOB — PREPARE TO GO TO WARP SPEED.



**NEXT WEEK —
TROUBLE WITH
AN ALIEN
ROBOT!**

VIC. 22.6.91-3