



BE ADVISED SUCH AGGRESSION WILL FAIL.

WE'LL SEE ABOUT THAT. KLINE, HIT THAT OVERSIZED BALL-BEARING WITH A MESON BLAST.



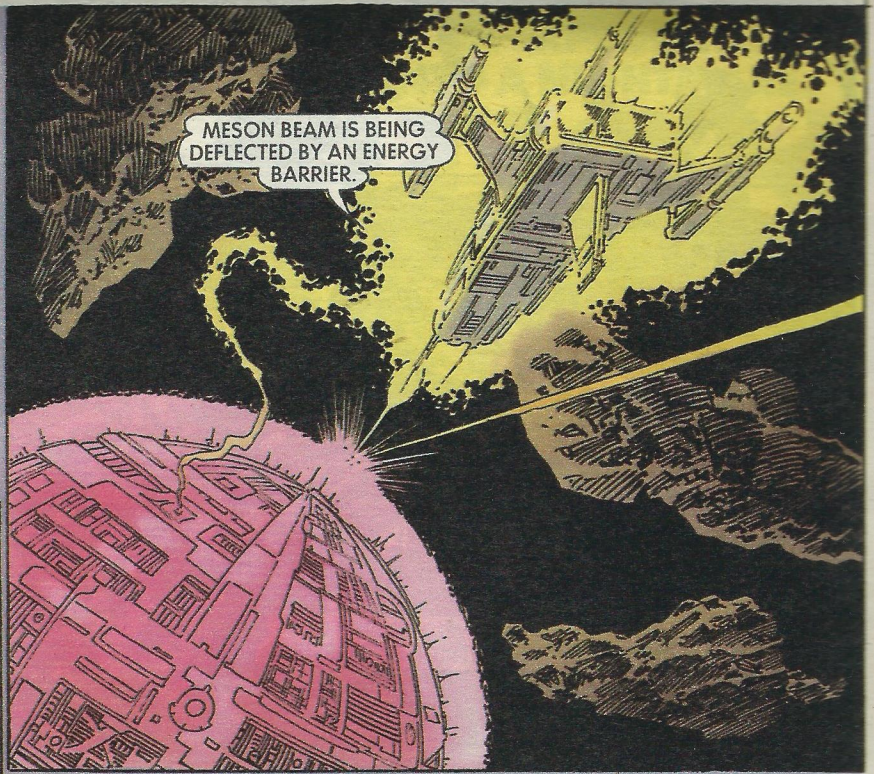
ACCEPT YOUR DESTINY OF BECOMING USEFUL SCIENTIFIC STUDY. WE ARE ESPECIALLY INTERESTED IN INVESTIGATIVE DISSECTION OF THE BIOLOGICAL SPECIMEN.

ARE YOU TALKING ABOUT ME, YOU TIN JUGHEAD?



SIR, HE'S GONE! I SUGGEST DESTRUCTION OF OURSELVES AND THIS VESSEL TO AVOID THE RISK OF PROVIDING THESE BEINGS WITH THE LOCATION OF THE EXODUS FLEET.

I AGREE, ANDY — ONLY NOT TILL WE'RE SURE THERE'S NO WAY OF ESCAPE.



MESON BEAM IS BEING DEFLECTED BY AN ENERGY BARRIER.



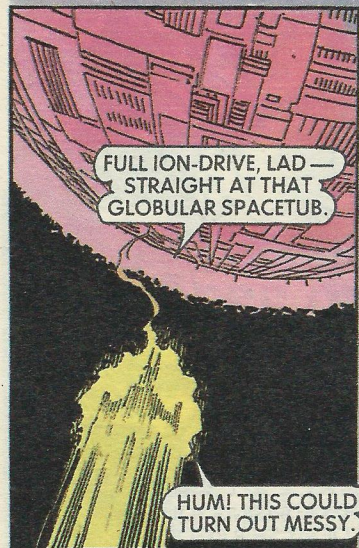
WE'RE BEING DRAWN IN AND I CAN THINK OF NO WAY OF AVOIDING ENTRY INTO THAT WAITING PORTAL.

ME NEITHER, ANDY. ACTIVATE THE SELF-DESTRUCT!



NO NEED OF EXPLODING US, GRANDSON. I'VE AN IDEA THAT'LL LIKELY GET THIS SHIP TORN APART ANYWAY.

ANY CHANCE IS BETTER THAN NO CHANCE! GO RIGHT AHEAD.



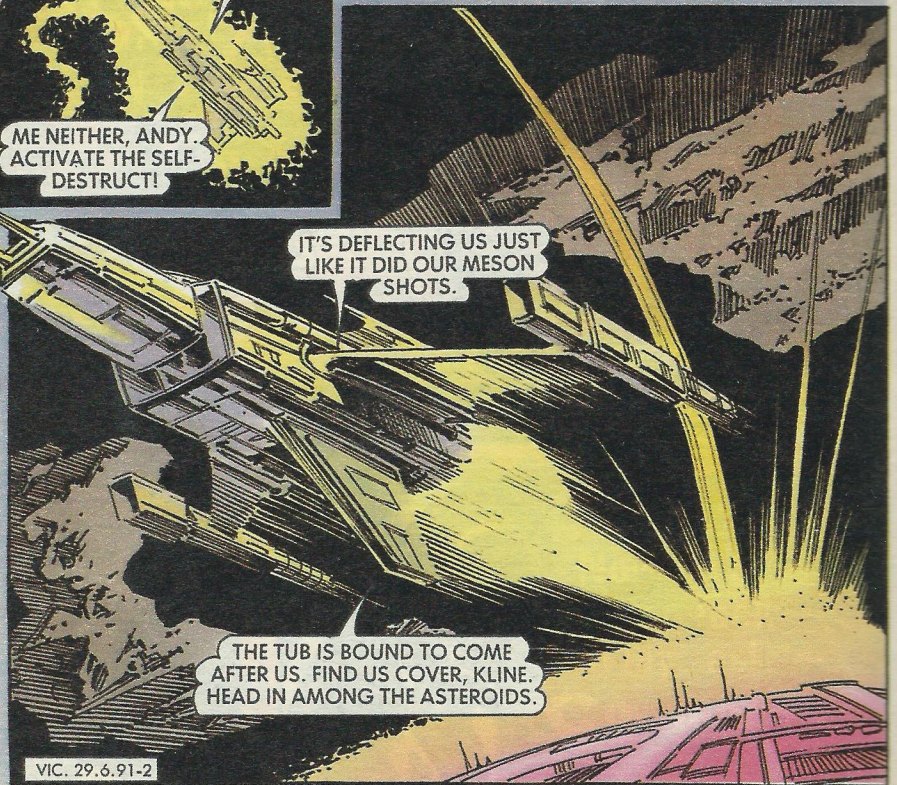
FULL ION-DRIVE, LAD — STRAIGHT AT THAT GLOBULAR SPACETUB.

HUM! THIS COULD TURN OUT MESSY.



AAAAH! WHAT'S HAPPENING?

WHAT I HOPED FOR. WE'VE ACTIVATED HIS ENERGY BARRIER.



IT'S DEFLECTING US JUST LIKE IT DID OUR MESON SHOTS.

THE TUB IS BOUND TO COME AFTER US. FIND US COVER, KLINE. HEAD IN AMONG THE ASTEROIDS.

VIC. 29.6.91-2