



THIS SHOULD STEM IT!

THIS ENTITY'S SURVIVAL IN SPACE MEANS IT IS RESISTANT TO HEAT AND COLD. YET WE CLEARED IT FROM THE LENSES. TRY WATER!



LET US SEE WHAT HAPPENS!

WATER!

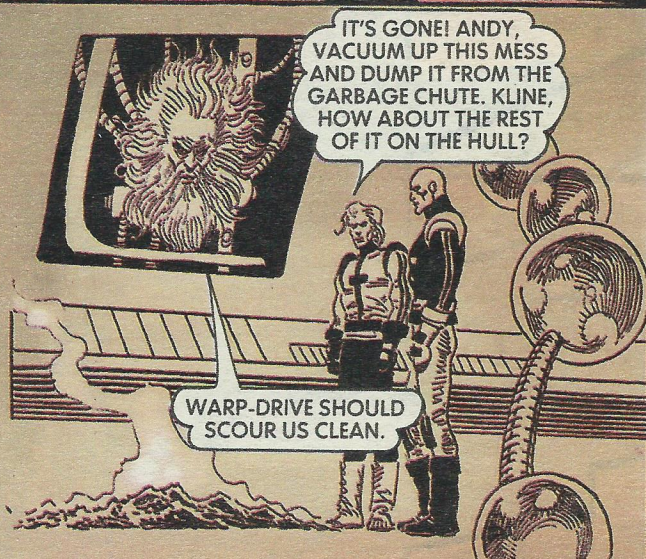


ARGH! KLINE, THINK OF SOMETHING — HURRY!

HURRY — HURRY —

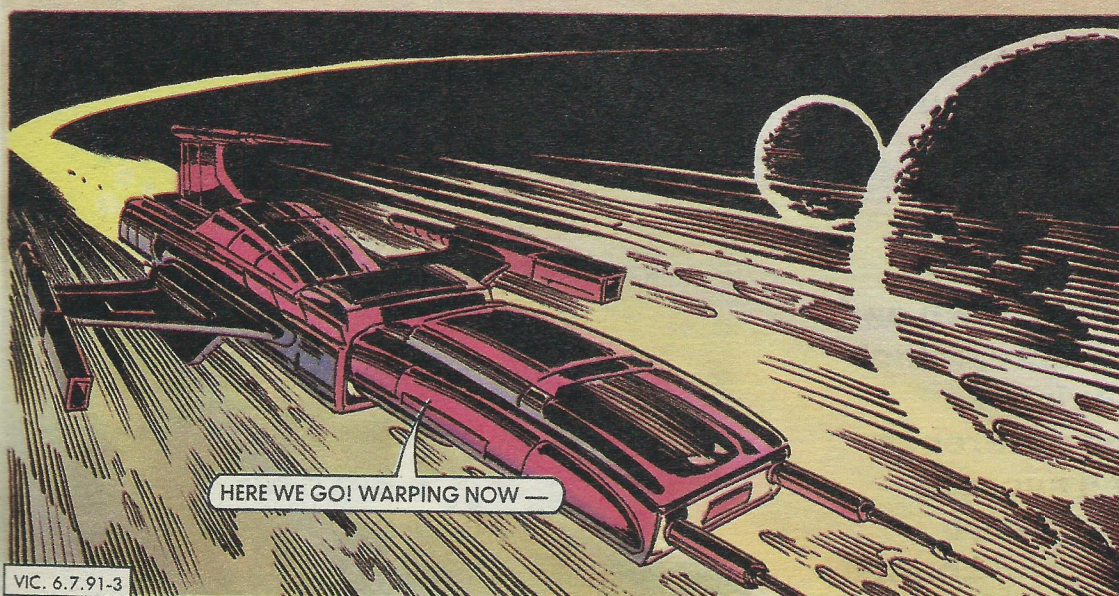


IT'S WORKING! THE THING'S DISINTEGRATING.



IT'S GONE! ANDY, VACUUM UP THIS MESS AND DUMP IT FROM THE GARBAGE CHUTE. KLINE, HOW ABOUT THE REST OF IT ON THE HULL?

WARP-DRIVE SHOULD SCOUR US CLEAN.



HERE WE GO! WARPING NOW —

**NEXT WEEK —  
KLINE GOES MAD  
AND ALMOST  
DESTROYS THE  
WARPER!**